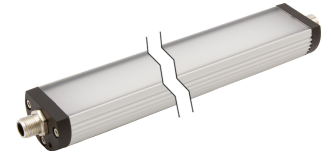


## EM42012x machine light series

LED machine light, Ø40mm white light, 5500K, 24V diagnostic coverage, -30-60°C, M12-connector 4-pin, IP54, aluminum+PMMA diffuse, addable

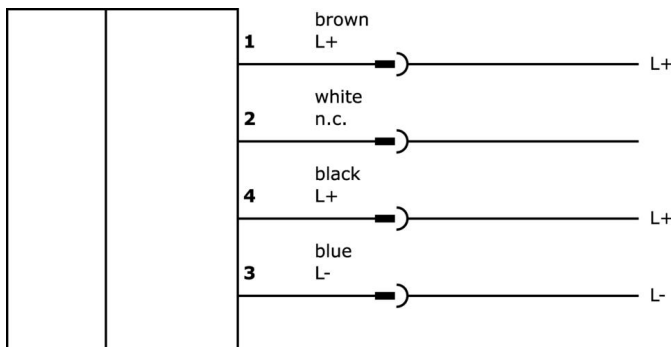


The temperature-resistant and slim industrial luminaire with a degree of protection of IP54 is sufficiently equipped to illuminate operating ranges on machines without coolant and chip bombardment or devices and systems. With a slim luminaire body made of extruded aluminum profile and black plastic end caps and sealed and shatterproof PMMA coverage, this series is suitable for use wherever flicker-free and performance-optimized surface light without UV and IR components and daylight white is required.

Article No.	EM420120	EM420121	EM420122
ardSOCA_Abmessungen			
ardSOCA_Betriebsspannung			
Rated operating current	167mA	250mA	355mA
Power	4W	6W	8.5W
Protection class	III		
Luminous flux	630lm	945lm	1260lm
Angle of beam spread	100°		
Illumination in the center (distance 1 m)	200lx	300lx	400lx
Color temperature	5500K		
ardSOCA_ElektrischerAnschluss			
Degree of protection (IP)	IP54		
Housing material	Aluminum		
Front screen material	Polymethyl methacrylate		
Ambient temperature	-30 - 60°C		

Article No.	EM420123	EM420124	EM420125
ardSOCA_Abmessungen			
ardSOCA_Betriebsspannung			
Rated operating current	542mA	710mA	1000mA
Power	13W	17W	24W
Protection class	III		
Luminous flux	1890lm	2520lm	3780lm
Angle of beam spread	100°		
Illumination in the center (distance 1 m)	600lx	750lx	1050lx
Color temperature	5500K		
ardSOCA_ElektrischerAnschluss			
Degree of protection (IP)	IP54		
Housing material	Aluminum		
Front screen material	Polymethyl methacrylate		
Ambient temperature	-30 - 60°C		

**Connection**



**Dimensional drawing**



Article No.	L
EM420120	190mm
EM420121	280mm
EM420122	365mm
EM420123	540mm
EM420124	715mm
EM420125	1040mm

**Extract accessories program**

**NG400501**



DC power supply, 1-phase, 125x114x40mm, 24-28V, 5A, 90-264V AC 50Hz, 90-264V AC 60Hz, 127-370V diagnostic coverage, screw connection, IP20, aluminum, stabilized, pulsed output voltage

**VY000007**



LED brightness module, 55x120x80mm, 4A, 24V DC, M12-connector, IP40, plastic

**VK000037**



Adaption, M12 Female (socket) 3pin Straight, M8 Male (connector) 3pin Straight, 24V, -25-85°C, IP67, Oil and cooling lubricants, Welding area

**VK200021**



Connection cable, 2m, M12 Female (socket) 3pin Angular, Free conductor end, 3x0.34mm<sup>2</sup>, PUR (Polyurethane), Ø4.3mm, 250V, -30-90°C, IP67, Suitable for trailing chain and torsion resistant, Oil and cooling lubricants, Welding area, Silicone-free

**VK200025**



Connection cable, 2m, M12 Female (socket) 3pin Straight, Free conductor end, 3x0.34mm<sup>2</sup>, PUR (Polyurethane), Ø4.3mm, 250V, -30-90°C, IP67, Suitable for trailing chain and torsion resistant, Oil and cooling lubricants, Welding area, Silicone-free

**VK200321**



Connection cable, 2m, M12 Female (socket) 4pin Angular, Free conductor end, 4x0.34mm<sup>2</sup>, PUR (Polyurethane), Ø4.7mm, 250V, -40-90°C, IP67, Suitable for trailing chain and torsion resistant, Oil and cooling lubricants, Welding area, Silicone-free

**VK200325**



Connection cable, 2m, M12 Female (socket) 4pin Straight, Free conductor end, 4x0.34mm<sup>2</sup>, PUR (Polyurethane), Ø4.7mm, 250V, -40-90°C, IP67, Suitable for trailing chain and torsion resistant, Oil and cooling lubricants, Welding area, Silicone-free

**VK003020**



Cable socket, Angular, Suitable for self-assembly, Screw connection, Ø3-6.5mm, 4A, 240V, -25-90°C, M12 Female (socket) 4pin, IP67, PBT

**VK003024**



Cable socket, Straight, Suitable for self-assembly, Screw connection, Ø3-6.5mm, 4A, 240V, -25-90°C, M12 Female (socket) 4pin, IP67, PBT

You can find further accessories on our homepage

**Installation**



Mounting / installation may only be carried out by a qualified electrician!

**Disposal**



**Safety warnings**

/ Before initial operation, please make sure to follow all safety instructions that may be provided in the product information.

/ Never use these devices in applications where the safety of a person depends on their functionality.

/ LED lighting systems can generate intensive UV radiation, which can damage your eyes in case of improper use. The manufacturer cannot be held responsible for damages that result from improper use or connection.